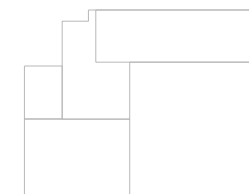


SHKOLLA



PROJEKTI HVAC:

F.V. Pajisje per sistemin e ngrohje-ftohje

BASHKIA VLORE

DREJTORIA E
URBANISTIKES

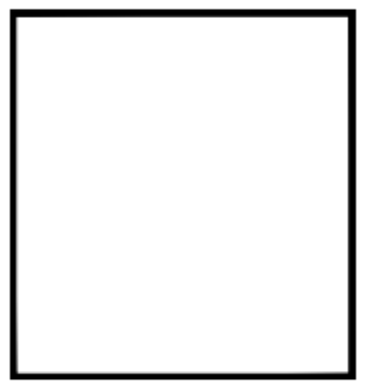
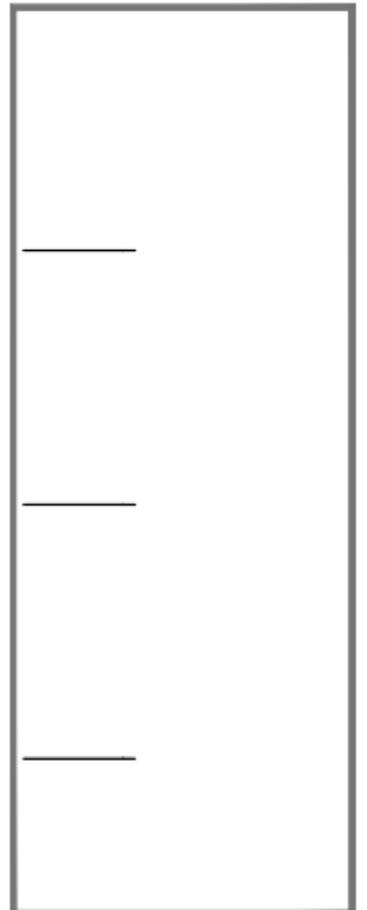
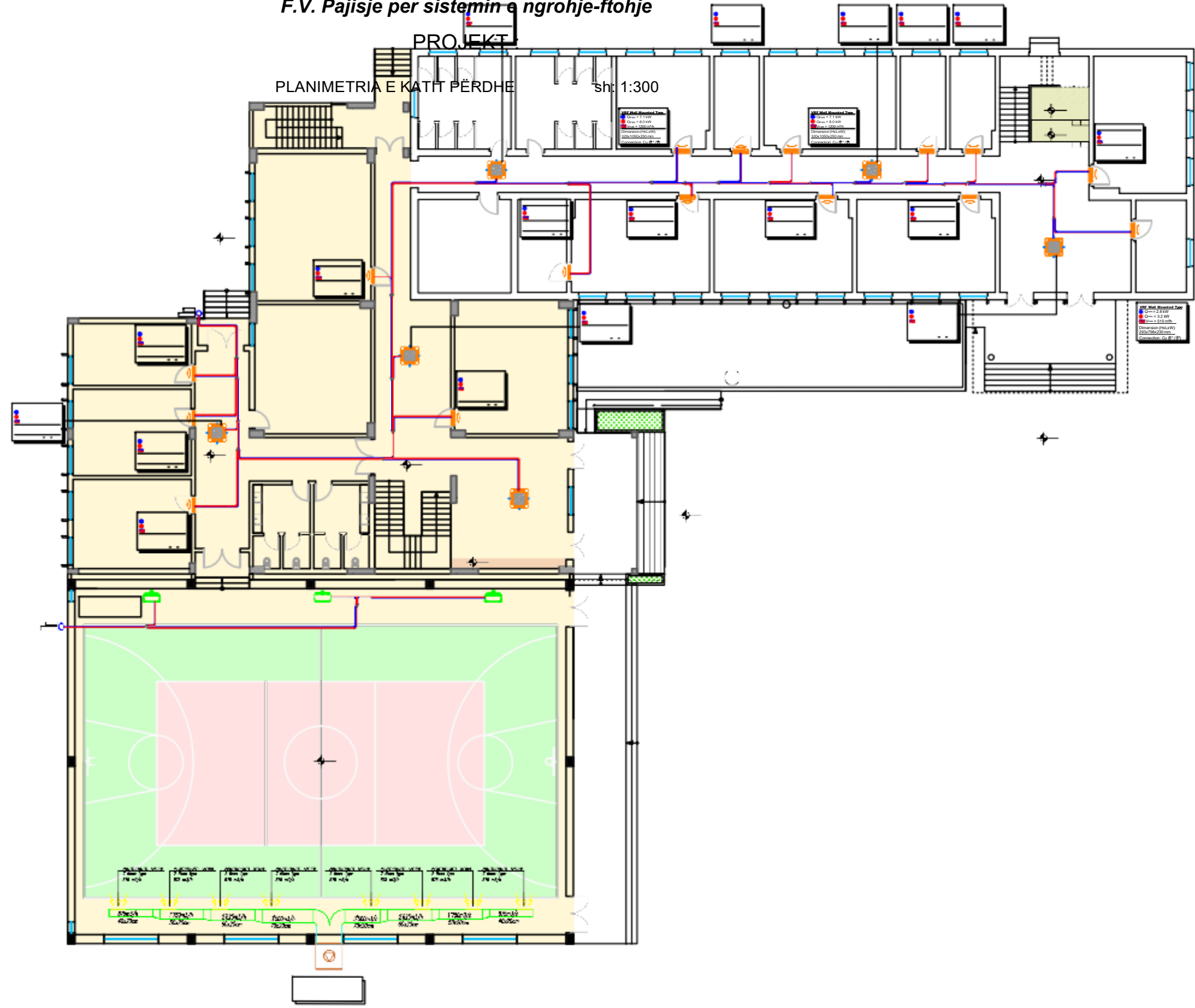
1100

F.V. Pajisje per sistemin e ngrohje-ftohje

PROJEKT

PLANIMETRIA E KATIT PËRDHE

Shk. 1:300





TË DHËNA:

Kati përdhe:
Sip_{ekzistuese} = 893 m²

Sip_{që priset} = 299 m²

Sip_{që shtohet} = 695 m
Sip_{totale} = 1289 m²

Nr klasash :
5 klasa (pjesa ekzistuese)
2 klasa (shtesa)
Gjithesëj 7 klasa

Kati i parë:
Sip_{ekzistuese} = 594 m²

Sip_{që shtohet} = 370 m²

totale = 964 m

Nr klasash :
5 klasa (pjesa ekzistuese)
5 klasa (shtesa)
Gjithesëj 10 klasa

Kati i dytë:
Sip_{ekzistuese} = 594 m²
Sip_{që shtohet} = 370 m²

totale = 964 m

Nr klasash :
8 klasa (pjesa ekzistuese)
5 klasa (shtesa)
Gjithesëj 13 klasa

TOTAL 30 klasa

BASHKIA VLORË

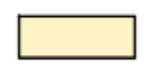
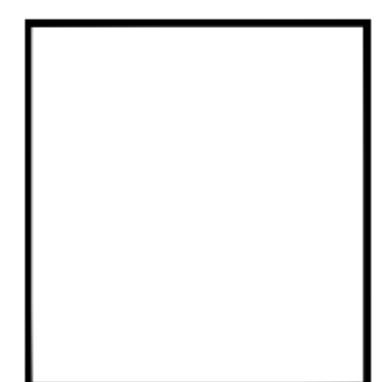
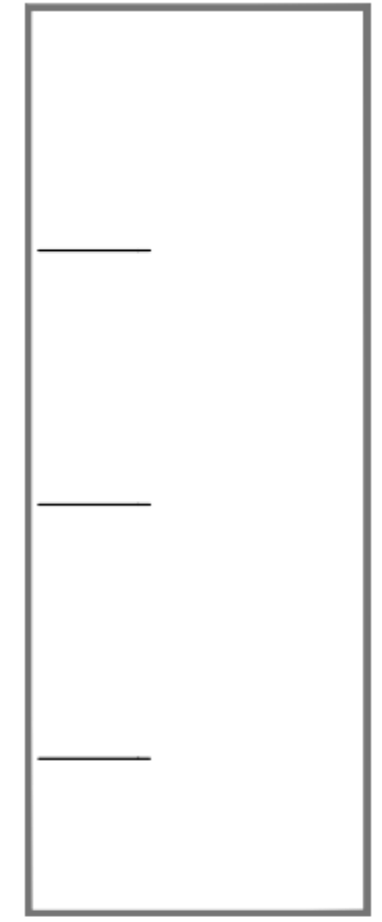
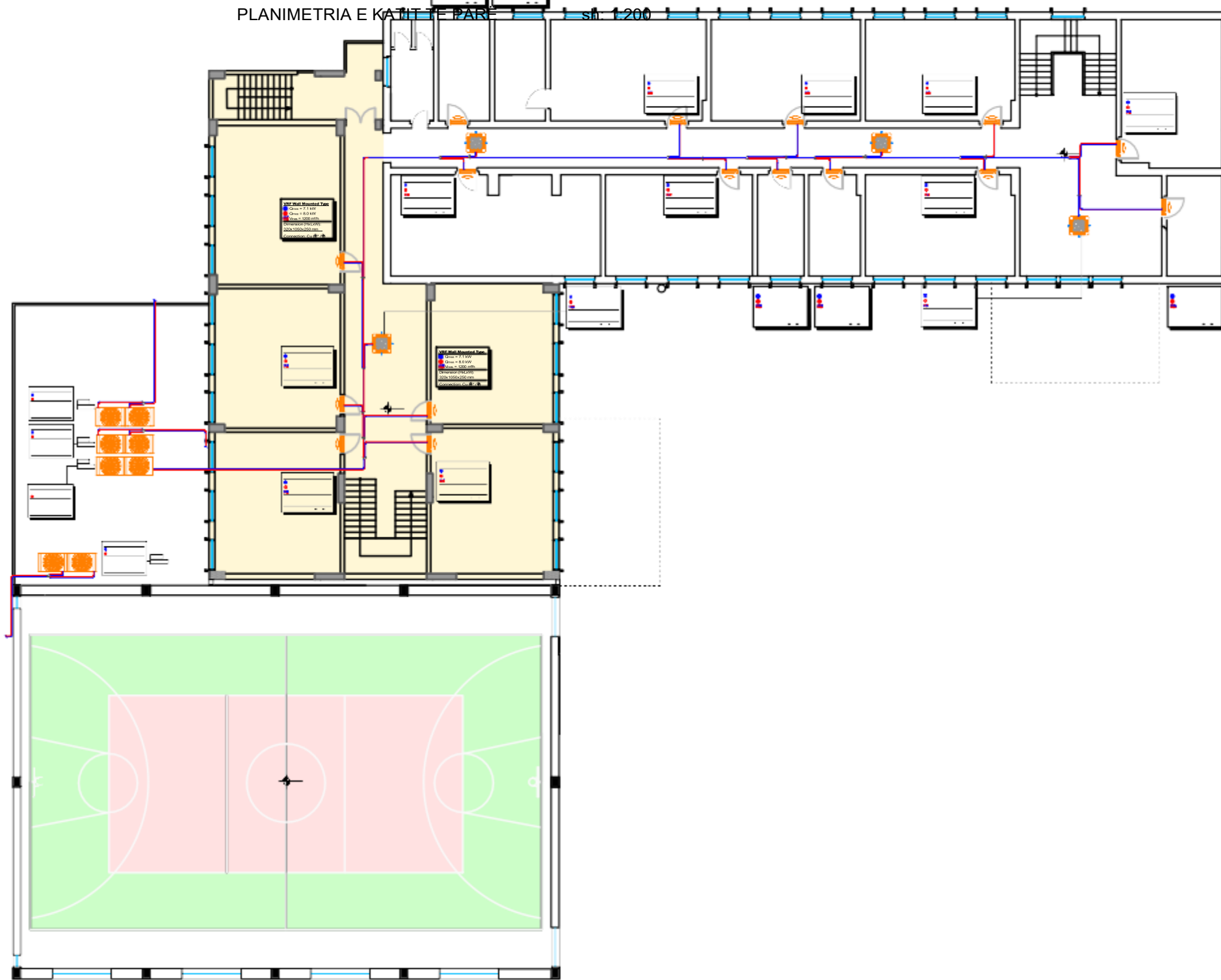
DREJTORIA E
URBANISTIKËS

GRUPI I PROJEKTIMIT:

Ing. Natasha Rusha

PROJEKT : *F.V. Pajisje per sistemin e ngrrohje-ftohje*

PLANIMETRIA E KATIT TE PARE sht. 1/200



PROJEKT : F.V. Pajisje per sistemin e ngrrohje-ftohje

PLANIMETRIA E KATIT TE DYTË

sh: 1:250

